

Ideal nursing workflows to support the development of information technology solutions

PROCESS



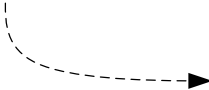
Represents a function or activity. The number is a unique identifier and does not indicate an order of execution. The name of the Process is in bold. The job role that executes the process is in parentheses, e.g., (Nurse).

Data Flow



Represents data and material flow. These data flows help us understand what information is being transmitted between processes, systems, or people.

Trigger



Represents a trigger. It indicates an event that triggers another event to happen.

Data Store



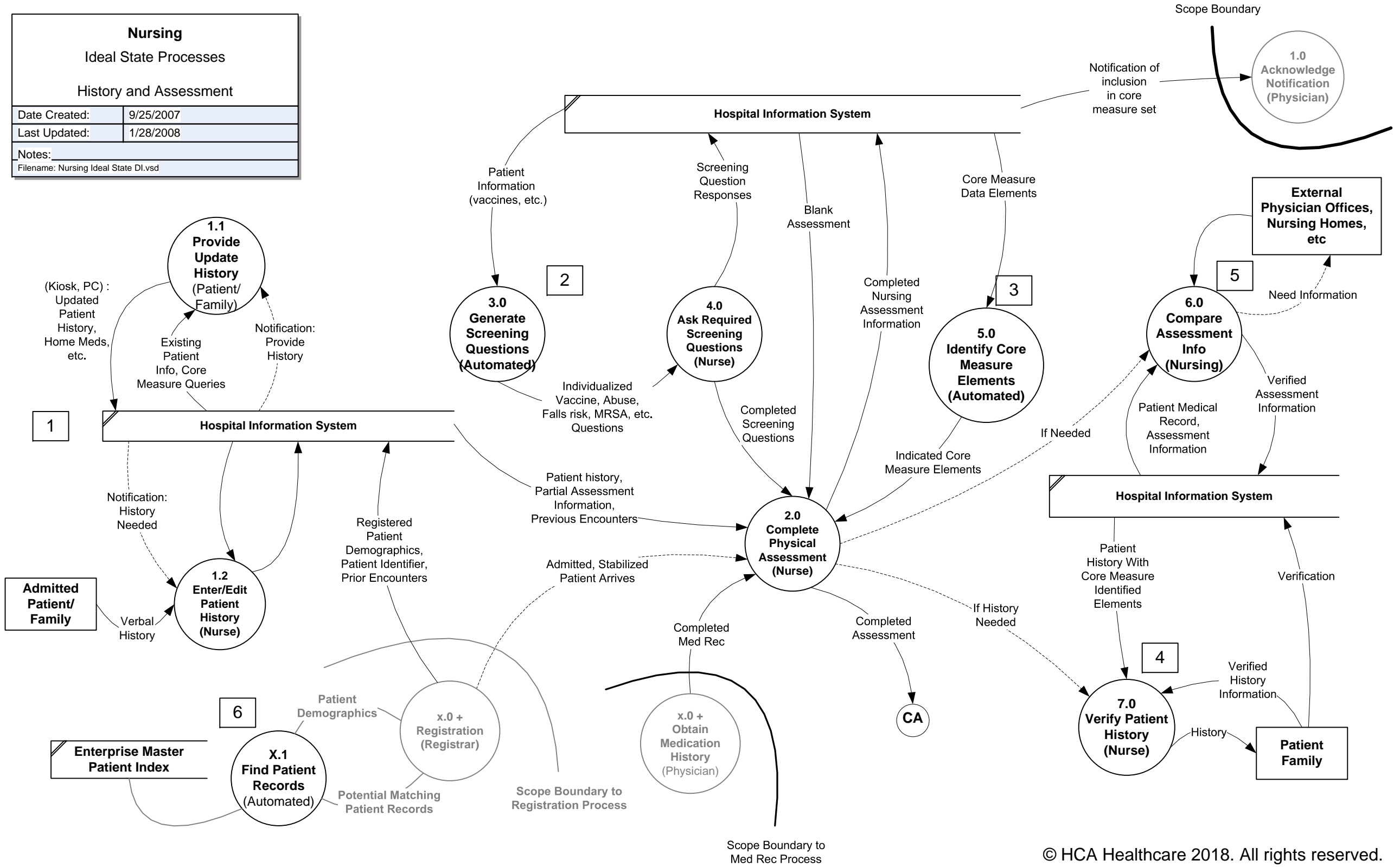
Represents a data store. A data store is where data may be stored between transactions or between executions of the system.

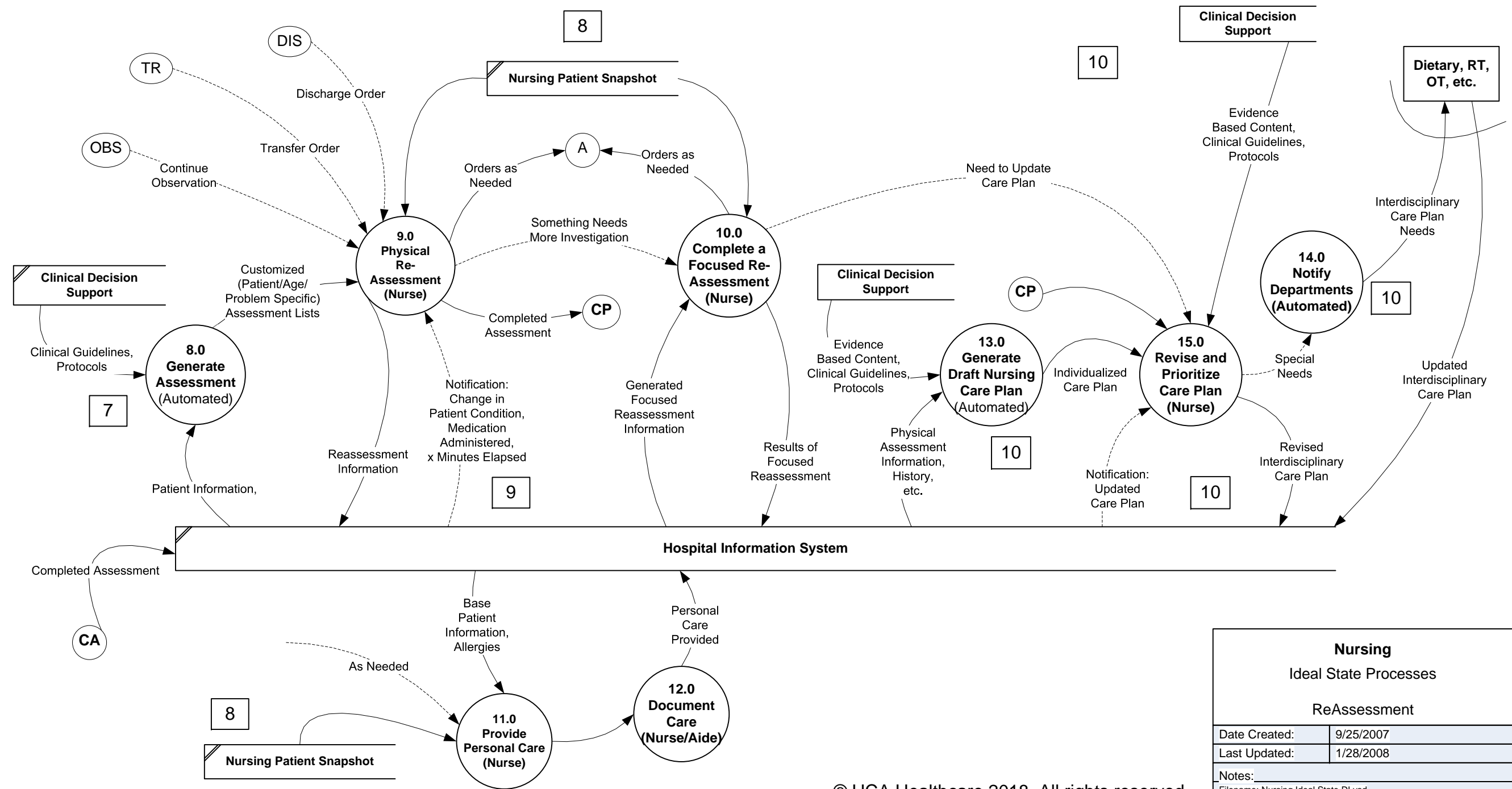
Data Source or Data Sink



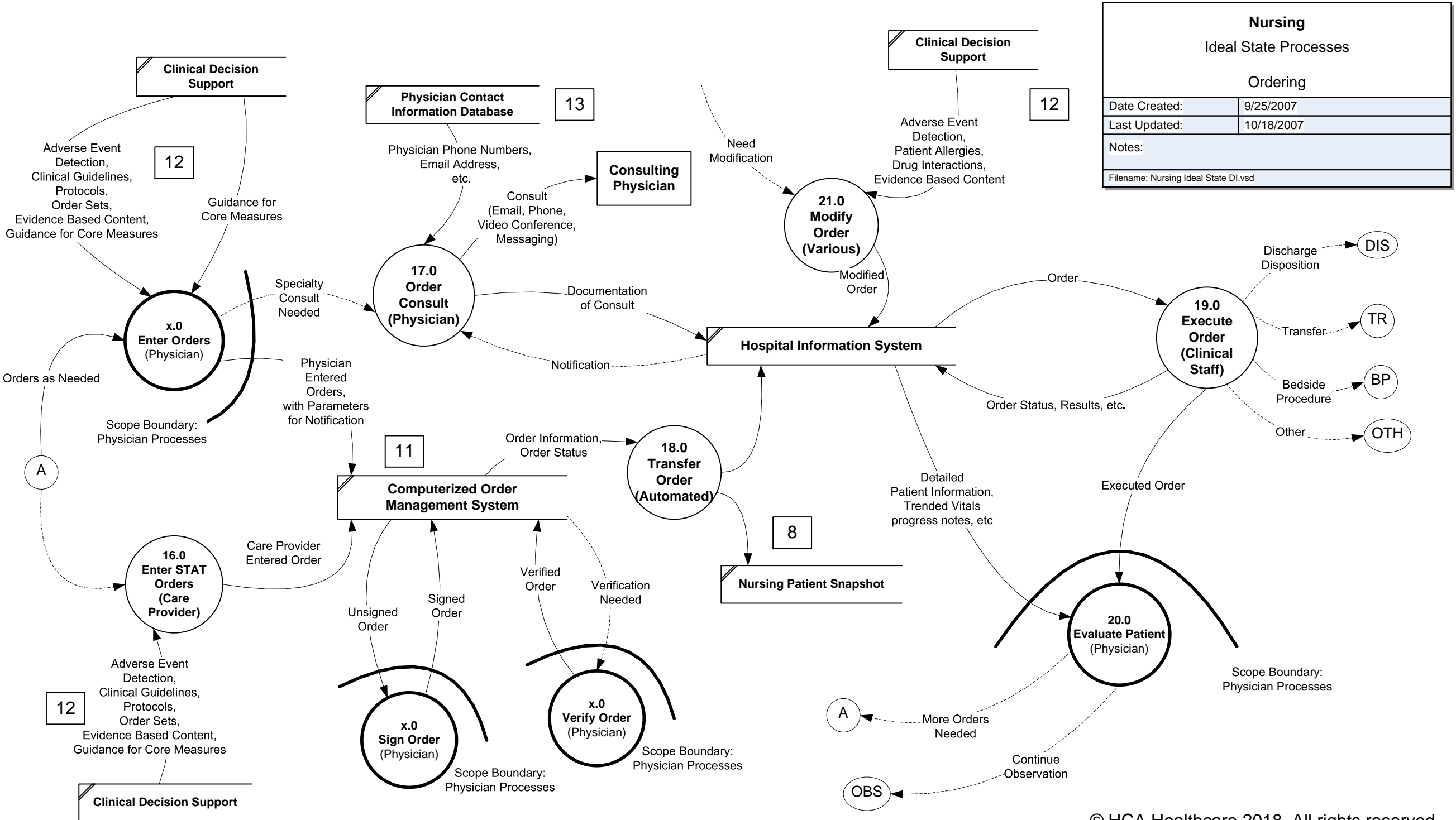
Represents a data source/sink. A data source/sink can be a supplier of data. Sources and Sinks can also be a user of the data.

Nursing	
Ideal State Processes	
History and Assessment	
Date Created:	9/25/2007
Last Updated:	1/28/2008
Notes:	
Filename: Nursing Ideal State DI.vsd	





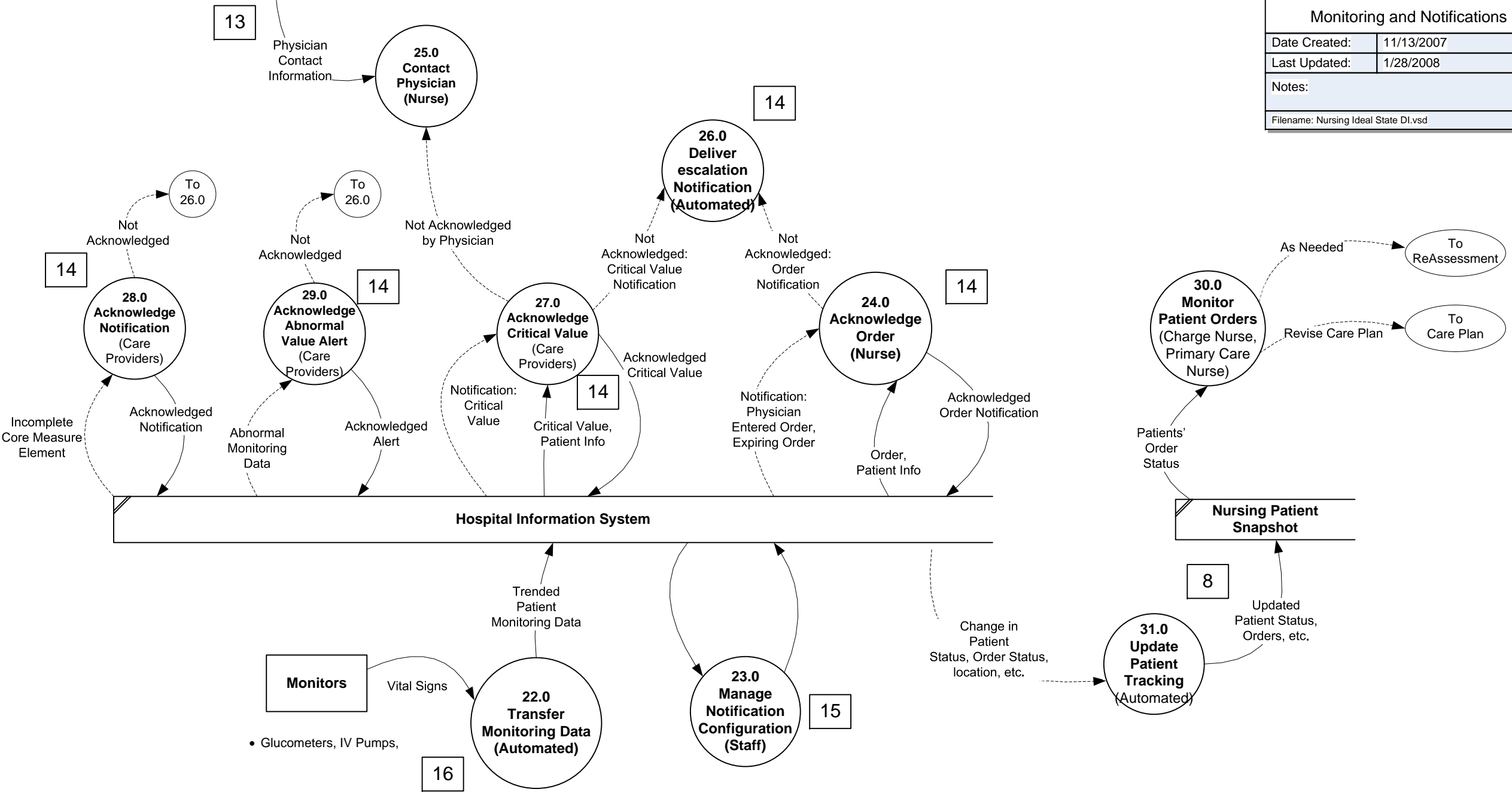
Nursing Ideal State Processes ReAssessment	
Date Created:	9/25/2007
Last Updated:	1/28/2008
Notes:	
Filename:	Nursing Ideal State DI.vsd



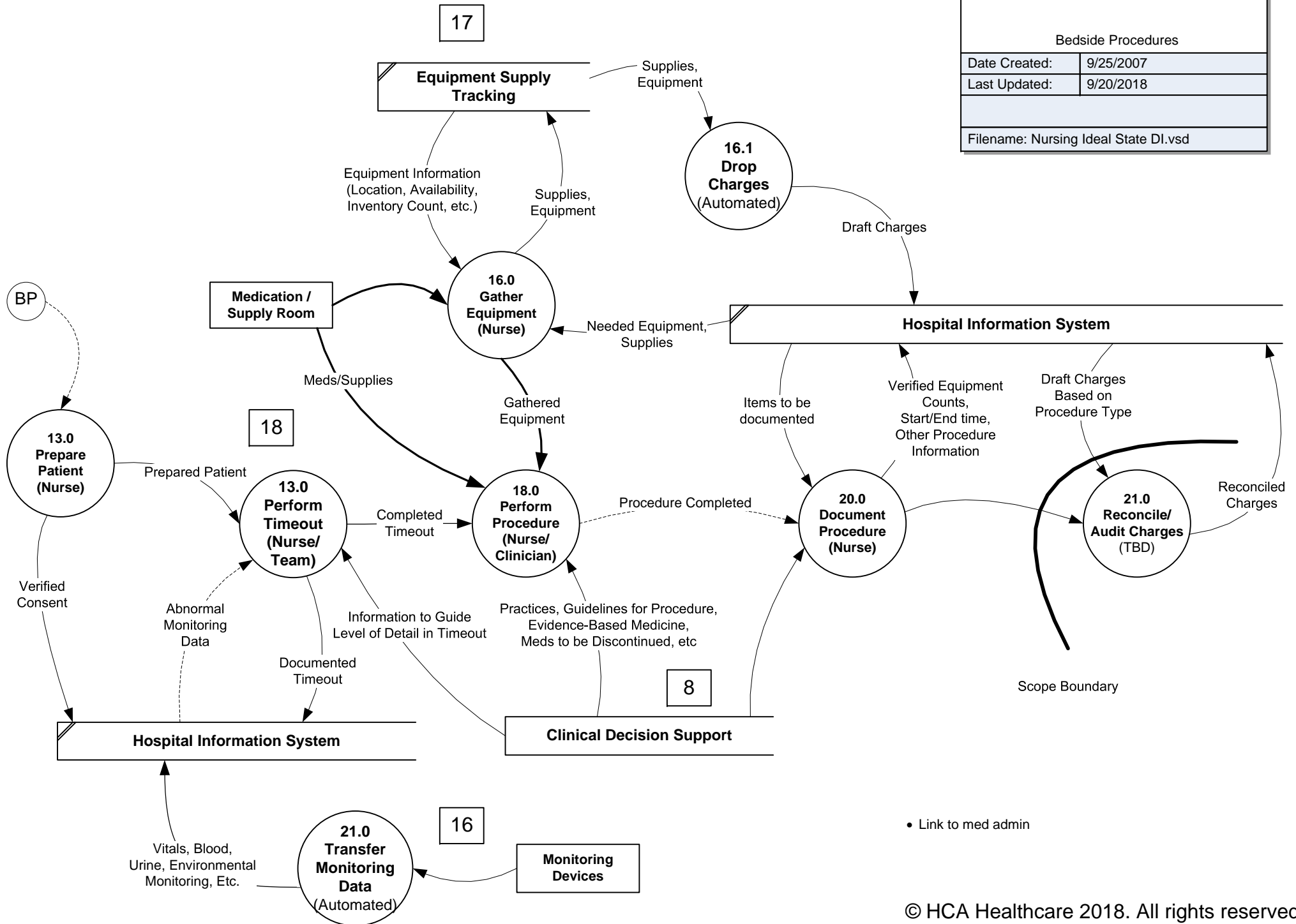
Physician Contact Database

• Critical Tests?

Nursing	
Ideal State Processes	
Monitoring and Notifications	
Date Created:	11/13/2007
Last Updated:	1/28/2008
Notes:	
Filename: Nursing Ideal State DI.vsd	

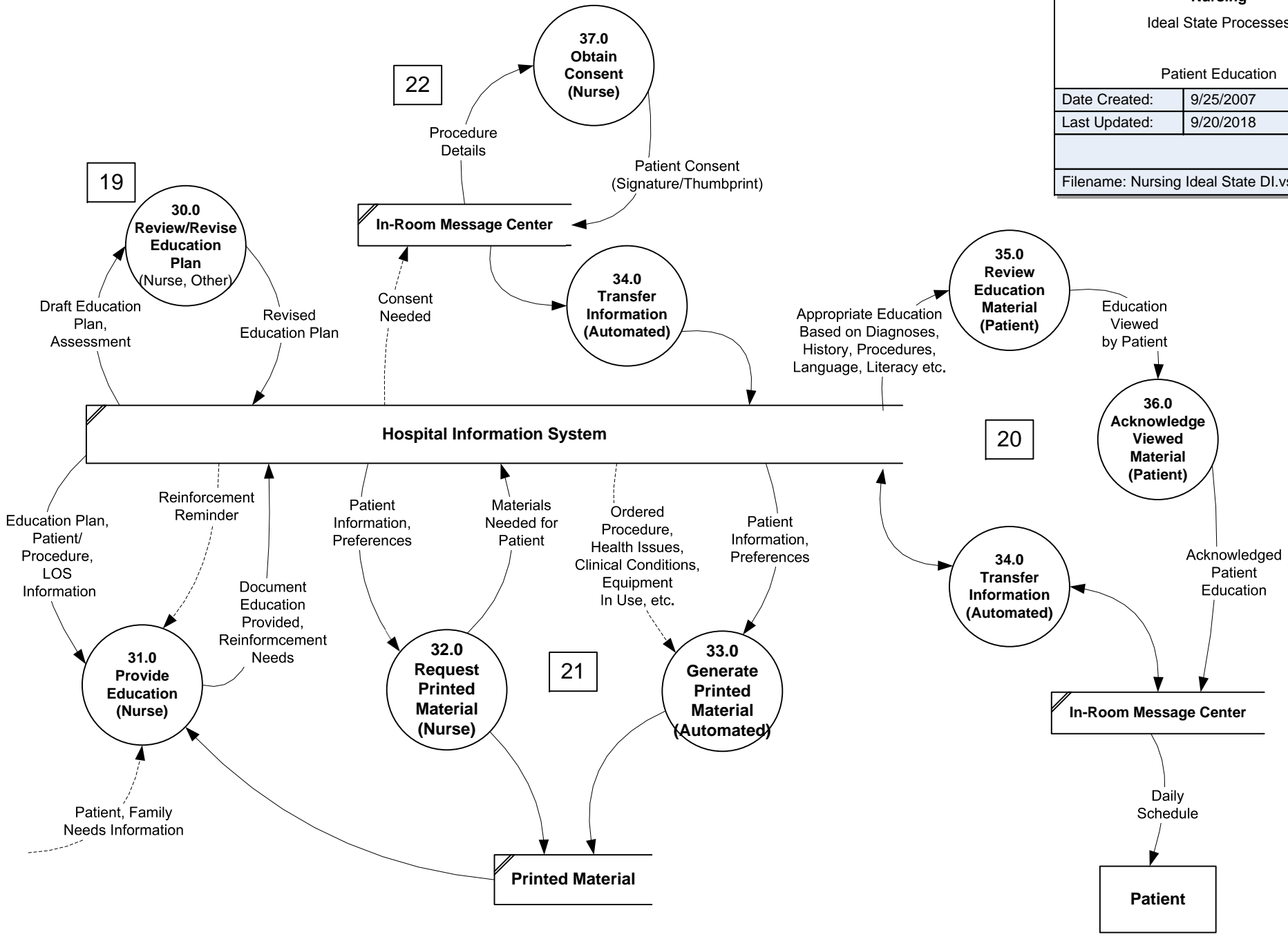


Nursing	
Ideal State Processes	
Bedside Procedures	
Date Created:	9/25/2007
Last Updated:	9/20/2018
Filename: Nursing Ideal State DI.vsd	



• Link to med admin

Nursing	
Ideal State Processes	
Patient Education	
Date Created:	9/25/2007
Last Updated:	9/20/2018
Filename: Nursing Ideal State DI.vsd	



- Show shift to shift communication
- Show transfer communication
- Show discharge communication

Nursing	
Ideal State Processes	
Handoff/Communication	
Date Created:	9/25/2007
Last Updated:	9/20/2018
Filename: Nursing Ideal State DI.vsd	

